

I-405 Express Toll Lanes - Using the Lanes

How do express toll lanes work?

Electronic signs post the toll rate based on destination and automatically adjust depending on traffic congestion. You pay the rate you see upon entering the express toll lanes. As more vehicles enter or exit the lanes at designated access points, the dynamic toll rates adjust so that traffic moves at least 45 miles per hour in the express toll lane.

- Video: Express toll lane basics
- Video: Experience the new I-405 express toll lanes

Where are the express toll lanes?

I-405 express toll lanes are located between Northeast Sixth Street in Bellevue and I-5 in Lynnwood. South of Northeast Sixth Street, the I-405 HOV lane will operate the same as it always has.

Get a feel for where you'll enter and exit the express toll lanes:

- Plug your route into the interactive map.
- Watch the express toll lanes in action by viewing this video series.

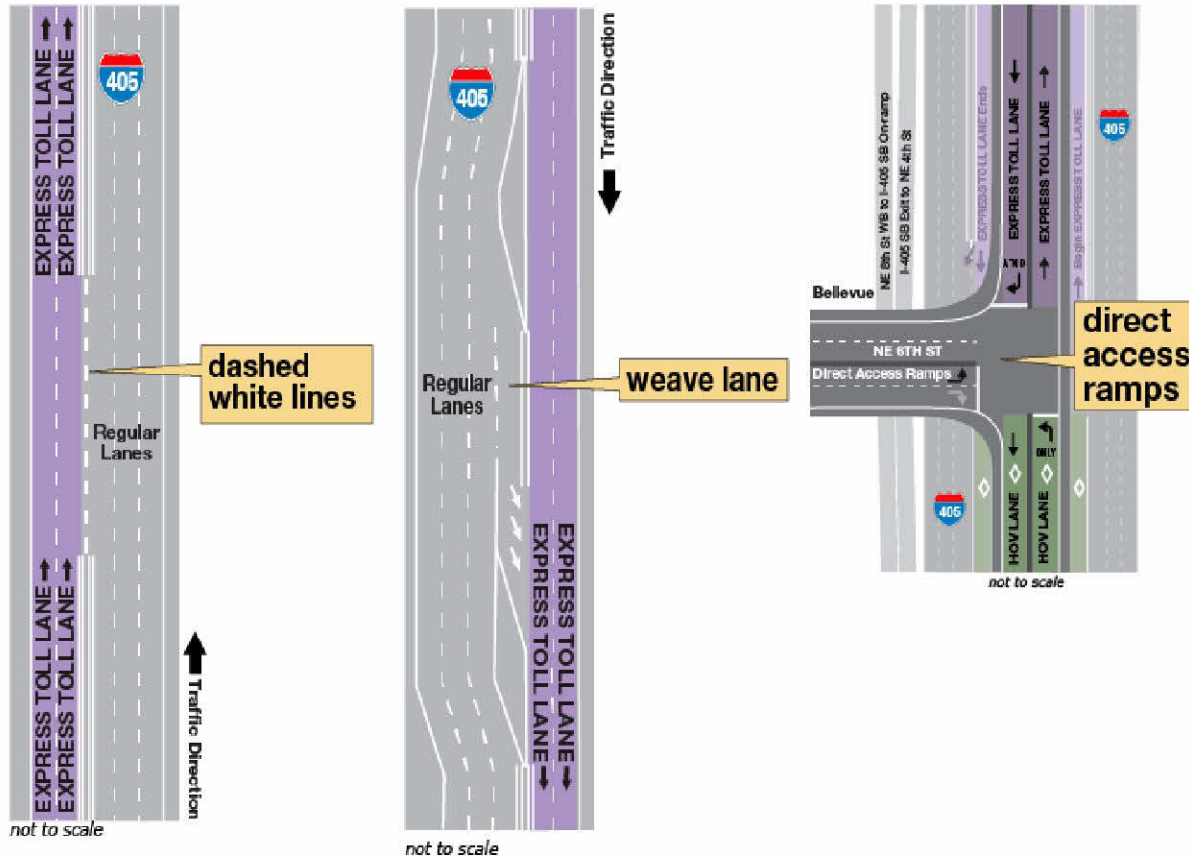
How do I access the express toll lanes?

Drivers will encounter three types of access and exit points for the I-405 express toll lanes. Some of these configurations may be new for drivers, and it is important for drivers to get familiar with the new system and learn how to safely merge in and out of the express toll lanes.

The most common access point in the corridor is a **dashed white line** that allows drivers to merge in or out of the express toll lanes.

Temporary **weave lanes** allow drivers to easily signal out of the express toll lanes before merging into the general purpose lane. This separates entering and exiting vehicles from through traffic.

At NE 6th Street in Bellevue and NE 128th Street in Kirkland, drivers can use the **direct access ramps** to enter and exit the express toll lanes. These ramps are open to all express toll lane users, including non-carpoools. Please note, the NE 6th Street on-ramp to southbound I-405 as well as the off-ramp from northbound I-405 are still restricted to HOV only.



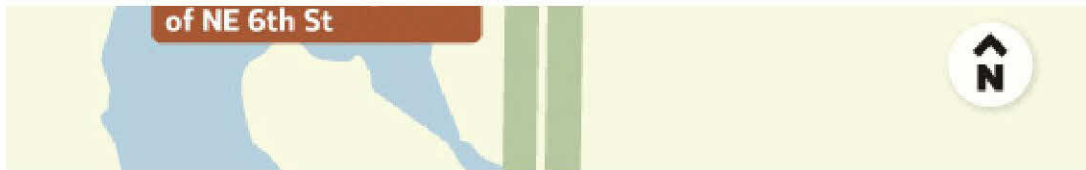
Remember that failure to use designated access points may result in a \$136 ticket for crossing the double white lines.

How many express toll lanes are there in each direction?

There are two express toll lanes in each direction of I-405 between Northeast Sixth Street in Bellevue and just south of SR 522 in Bothell. There is one express toll lane in each direction of I-405 between SR 522 in Bothell and I-5 in Lynnwood.







When would I use express toll lanes?

I-405 express toll lanes are there when you need them. Whether that is during your regular daily commute, running late to an appointment or picking up your child from school or day care, it's an option for a faster trip. The express toll lanes operate 24 hours a day, seven days a week.

How do I pay the toll?

Tolls are deducted from your *Good To Go!* account using your pass. You must have a Flex Pass set to HOV mode to travel toll-free. If you do not have a *Good To Go!* account, we will send a bill at a higher toll rate to the registered vehicle owner. Learn more about how to pay.

Are large trucks allowed to use the I-405 express toll lanes?

Trucks over 10,000 pounds gross vehicle weight are not allowed into the express toll lanes. This is consistent with HOV lane restrictions throughout Washington. We will monitor traffic patterns in the new lanes and may consider adjusting the rules for some trucks in the future.

Copyright WSDOT © 2015